

SMART HEATING + COOLING

YOUR GLOBAL OEM PARTNER
FOR INNOVATIVE HEATING & COOLING
COMPONENTS AND SOLUTIONS.

radiant heating
& cooling
components

OEM

Your **OEM** Partner

 **KLEVE**

 **BOLZANO**

 **VEROLANUOVA**

3 production sites

28.000 m² of production area

45 production machines

12 technologies

87 employees

360° production process

**think.
innovate.
realise.**



Enetec combines almost forty years of experience as a manufacturer of components for surface heating and cooling systems (e.g. EPS insulation panels, PE-RT pipes, control systems, composite manifolds, ceiling systems, etc.) with a young and dynamic engineering team. Thanks to constant investments in research and development of new materials and technologies, the company is able to bring many innovative applications and products to the market. The philosophy of Enetec is to

produce quality products tailored to the specific requirements of its customers in order to meet the current market needs and the trends of tomorrow. Based on advanced innovation management and efficient manufacturing processes, Enetec offers a full service and customised performances. From personal support to technical consulting on product development, as well as special designs for the manufacturing of individual products, up to series production.

**CHOOSE QUALITY
& CERTAINTY**



 **Cerved Rating** Agency



PLASTIC MOLDING

Technology plant Bolzano/Bozen (Italy): 2.500 m² of production area • Integrated plastic and metal production • In-house mold manufacturing • Assembling facilities

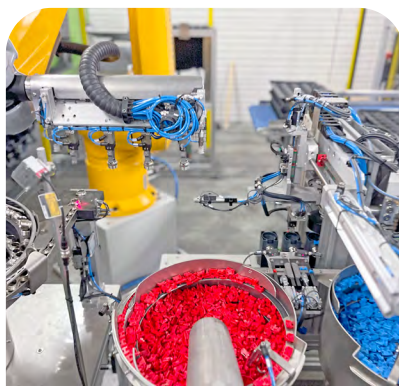
We provide the complete plastic moulding service, including design and development, mould manufacture, production and product manufacture. In addition, we have all the necessary machines for the moulding phase.

Our engineering staff is here to help you not only to design for best moulding results but also to choose the most economical way to prototype. After every detail has been fine-tuned, we will put your product into production.

In addition to the milling and tooling department, our factory in Bolzano/Bozen (Italy) is also specialized in the realisation of metal components that can be milled or turned.

Forniamo il servizio completo di stampo plastiche, inclusi progettazione e sviluppo, fabbricazione dello stampo, produzione e realizzazione dei prodotti. Inoltre, disponiamo di tutte le macchine necessarie per la fase di stampaggio. Per garantirti il miglior risultato possibile, puoi chiedere la consulenza dei nostri ingegneri per progettare lo stampo in maniera corretta e farti consigliare il modo migliore per realizzare i prototipi. Dopo aver messo a punto ogni dettaglio, metteremo in produzione il tuo prodotto. Oltre al reparto di fresatura e utensileria, la nostra azienda di Bolzano è specializzata in componenti metallici che possono essere fresati o lavorati al tornio.

Wir bieten einen kompletten Plastik-Spritzgussformen-Service an, einschließlich Design und Entwicklung, Formenbau, Produktion bis hin zur Serienproduktion. Außerdem verfügen wir über alle notwendigen Maschinen für die Formgebungsphase. Unser Team von Ingenieuren unterstützt Sie dabei. Nicht nur bei der Entwicklung Ihrer personalisierten Produkte, sondern auch bei der Wahl der geeigneten Materialien und der Art des Prototypenbaus. Nachdem jedes Detail abgestimmt ist, gehen wir mit Ihrem Produkt in die Produktion. Ein weiterer Produktionsbereich in Bozen (Italien) stellt die Metallbearbeitung und die hochmoderne Fräseinheit dar.





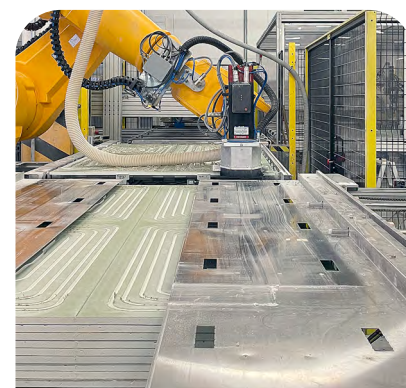
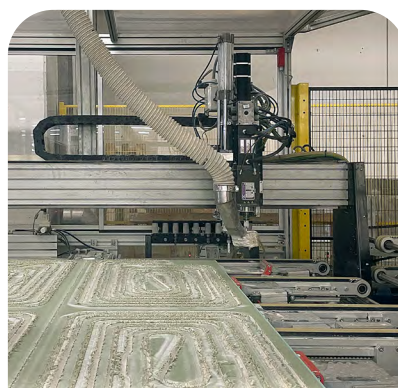
PLASTERBOARD MILLING

Technology plant Bolzano/Bozen (Italy): 2.500 m² of production area • Integrated plastic and metal production • In-house mold manufacturing • Assembling facilities

At our factory in Bolzano/Bozen (Italy), we have a tooling department with a wide range of specialised machinery, including high-precision CNC machines, grinding and milling machines. In addition, we have a machine designed and dedicated exclusively to the production of plasterboard products like ceiling or wall systems for heating and cooling applications. On the other hand, our double plasterboard acoustic boards are designed to combine the climatic comfort advantages of a radiant ceiling system with a high sound-absorption power capable of eliminating the bothering effects of environmental reverberation. Whatever your need, we have the expertise and equipment to satisfy you.

Nella nostra sede di Bolzano, abbiamo un reparto di utensileria con ampia gamma di macchinari specializzati, incluse macchine CNC ad alta precisione, macchine per la fresatura e per la tornitura. Inoltre, disponiamo di una macchina progettata e dedicata esclusivamente alla produzione di lastre in cartongesso per sistemi di riscaldamento e raffreddamento radiante, a parete e a soffitto. Le nostre lastre con un elevato potere fonoassorbente sono invece progettate per consentire al soffitto radiante un elevato potere fonoassorbente in grado di eliminare gli effetti fastidiosi del riverbero ambientale. Qualunque sia la tua esigenza, abbiamo le competenze e le attrezzature per soddisfarla.

An unserem Standort in Bozen (Italien) verfügen wir über ein breites Spektrum an modernen Produktionsmaschinen, darunter hochpräzise CNC-Maschinen, Fräs- und Drehmaschinen. Darüber hinaus verfügen wir über eine Maschine, die ausschließlich für die Herstellung von Gipskartonplatten bestimmt ist, mit der Decken- und Wandsysteme für Flächenheizung und -kühlung produziert werden können. Unsere hoch schallabsorbierenden Gipsplatten sind hingegen für die aktive Akustikdecke entwickelt und vereinen die Anforderungen einer effizienten Raumgestaltung. Was auch immer Sie brauchen, wir haben das Fachwissen und die Ausrüstung, um es zu erfüllen.





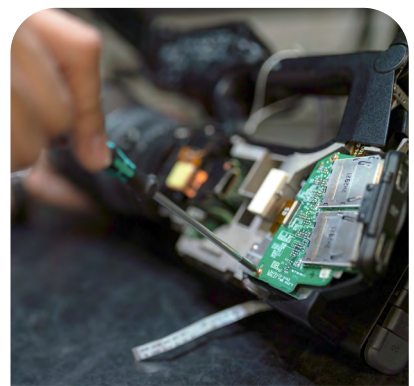
SMART REGULATIONS

Technology plant Bolzano/Bozen (Italy): 2.500 m² of production area • Integrated plastic and metal production • In-house mold manufacturing • Assembling facilities

Comfort, in its various expressions, is a major theme of modern life. Radiant heating and cooling through floor, wall or ceiling systems offers numerous advantages, including silent and invisible well-being all year round. The core of each radiant system is the unit regulating its operation, which therefore makes the difference. It must be able to efficiently manage energy consumption while constantly guaranteeing the most appropriate comfort conditions for each season. The cloud-based Smart365 product family, developed and manufactured in our factory in Bolzano/Bozen (Italy), is designed to fulfill these and more requirements.

Il comfort, nelle sue varie espressioni, è uno dei temi principali della vita moderna. Il riscaldamento ed il raffrescamento radiante attraverso i sistemi a pavimento, a parete o a soffitto offrono numerosi vantaggi, tra cui il benessere silenzioso e invisibile tutto l'anno. Il cuore di ogni sistema radiante è l'unità che regola il suo funzionamento, il che quindi fa la differenza. Deve essere in grado di gestire in modo efficiente il consumo di energia garantendo costantemente le condizioni di comfort più appropriate per ogni stagione. La famiglia di prodotti Smart365 basata sul cloud, ideata e prodotta nel nostro stabilimento a Bolzano, è progettata per soddisfare questi e altri requisiti.

Komfort ist in seinen verschiedenen Ausdrucksformen ein Hauptthema des modernen Lebens. Der Herz jeder Heizungs- und Kühlanlage ist die Einheit, die dessen Betrieb regelt. Die Regelung muss in der Lage sein, den Energieverbrauch effizient zu steuern und gleichzeitig die für jede Jahreszeit am besten geeigneten Komfortbedingungen zu gewährleisten. Die Cloud basierte Produktfamilie Smart365, die in unserem Werk in Bozen (Italien) entwickelt und hergestellt wird, erfüllt diese und weitere Anforderungen um alle Aspekte der Heizung, Kühlung und Lüftung über eine einzige Benutzeroberfläche zu verwalten.





EPS PROCESSING

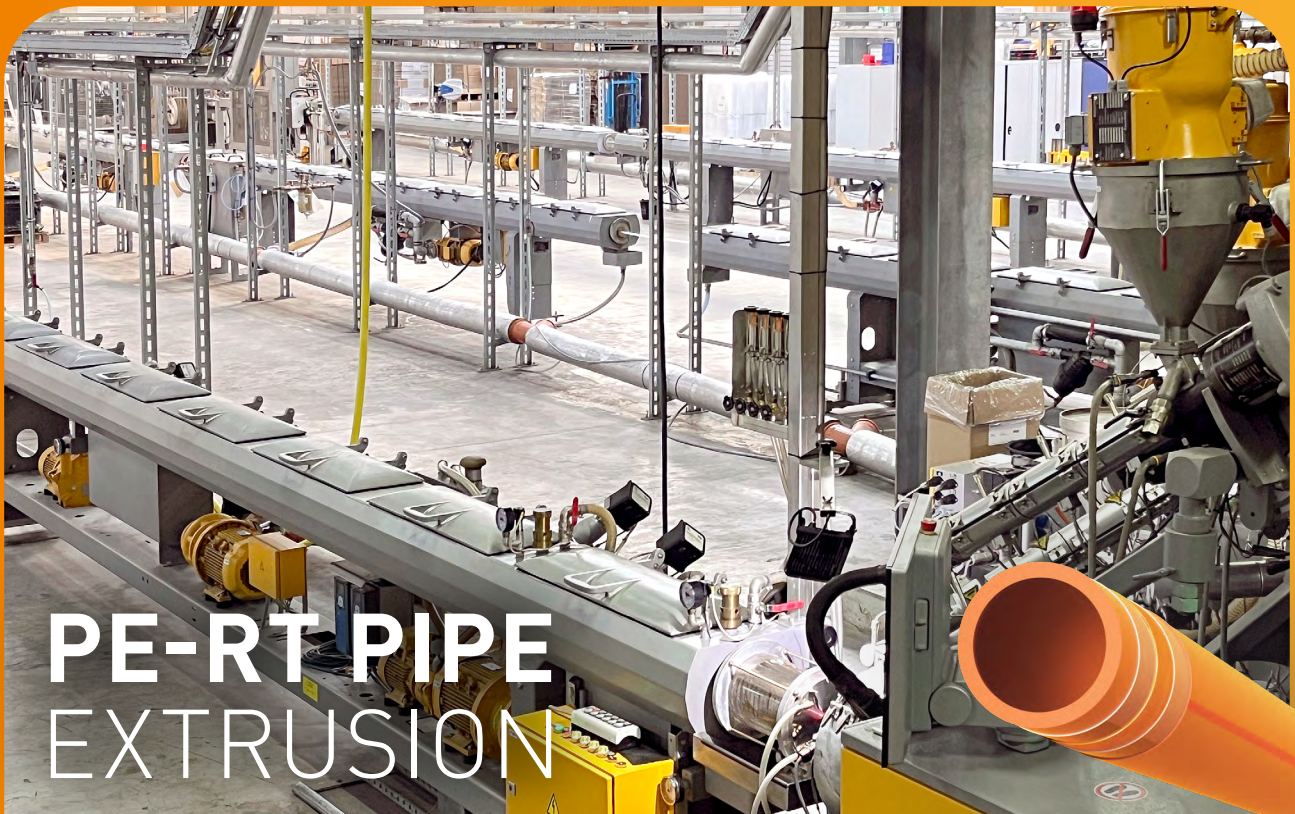
EPS plant Verolanuova (Italy): 20.000 m² of production area • Different technologies: skinning, thermoforming, melting • Own thermoforming patent • In-house product prototyping

EPS is a highly versatile material for molding a wide variety of finished parts. Our customers enjoy a wider product portfolio, significantly reduced processes costs, improved performance and advanced environmental benefits. We are constantly developing new material grades and molding techniques, all in support of extending the range of applications. The final transformation of nob boards is the skinning or coupling with thermoformed PS Foils, that can vary from a thickness of 0,16 mm to 1 mm. In the realisation of the flat boards, the panels are hot melted with different foils or materials. This allows to make different products, all from one single plant based in Verolanuova (Italy).

L'EPS è un materiale molto versatile per lo stampaggio di prodotti finiti. I nostri clienti possono usufruire di un'ampia gamma di prodotti, con processi più performanti e costi ridotti, a beneficio anche dell'ambiente. Sviluppiamo costantemente tecniche di stampaggio su nuove tipologie di materiali che estendono i campi di applicazione. La trasformazione finale delle lastre bugnate è l'accoppiamento con fogli termoformati di polietilene PS che variano da 0,16 a 1 mm di spessore. Nelle lastre piane, invece, i pannelli sono incollati a caldo con varie pellicole o materiali. Ciò permette di realizzare prodotti molto diversi tra loro, il tutto in un unico impianto che ha sede a Verolanuova (BS).

EPS ist ein geeignetes Material um verschiedenste Elemente in unterschiedlichsten Formen zu produzieren. Unsere Kunden schätzen das reichhaltige Portfolio, die Flexibilität der Produktion, die optimierten Prozesse und die Qualitätsgarantie. Wir forschen täglich nach neuen Materialkompositionen und Technologien um unser Angebot zu verfeinern und auszuweiten. Unser Core-Business liegt bei der Produktion von Noppenplatten, die wir kaschieren oder mit Tiefziehfolien aus PS (0,16-1 mm Stärke) verbinden. Dies garantiert dem Kunden eine breite Produktpalette mit vielen Personalisierungsmöglichkeiten. Alles aus einer Hand – produziert in einer Produktionsstätte: Verolanuova (Italien)





PE-RT PIPE EXTRUSION

Pipe extrusion plant Kleve (Germany): 5.500 m² of production area •
High flexible materials • Total process control • In-house laboratory • Quality made in Germany

Enetec pipes are especially developed according customer needs demanding highly flexible pipes with extraordinary long term resistance. Due to the very long experience of Enetec employees extruding pipes for more than 25 years, we are very pleased being a trustable and experienced producer for our partners. The integration of our superb working experience combined with the state-of-the-art extrusion technology we grant our partners a perfect quality of extruded pipes. At our plant in Kleve (Germany), in the region of the beautiful lower-rhine, we are focused on extrusion-technology. Our partners appreciate the spread of production technologies, Enetec can support.

I tubi del marchio Enetec sono sviluppati in base alle esigenze dei clienti, e garantiscono la massima flessibilità unita ad una straordinaria resistenza nel lungo termine. Grazie all'esperienza maturata nel settore in oltre 25 anni di produzione di tubo, Enetec è il fornitore ideale per affidabilità e competenza. L'esperienza lavorativa coniugata con la più avanzata tecnologia di estrusione garantisce ai nostri partner la perfetta qualità delle tubazioni, che vengono prodotte nel nostro stabilimento di Kleve (Germania), nella regione del Basso Reno. I nostri clienti possono apprezzare la varietà di tecnologie di produzione che riusciamo a supportare.

Enetec Rohre zeichnen sich durch ihre hohe Flexibilität und außergewöhnliche Langzeitbeständigkeit aus. Spezielle Kundenwünsche und ein umfangreicher Rundumservice ist Teil unserer Philosophie. Die über 25-jährige Erfahrung unserer Mitarbeiter im Bereich der Rohrestrusion und die hochmoderne Extrusionstechnologie, am Standort Kleve, ermöglicht es uns, der ideale Partner für Qualität und Service zu sein. Unsere Kunden bzw. Partner schätzen nicht nur die Perfektion der Produkte, sondern auch die Produktionstechnologie und die hohe Flexibilität, den verschiedensten Kundenwünschen gerecht zu werden.





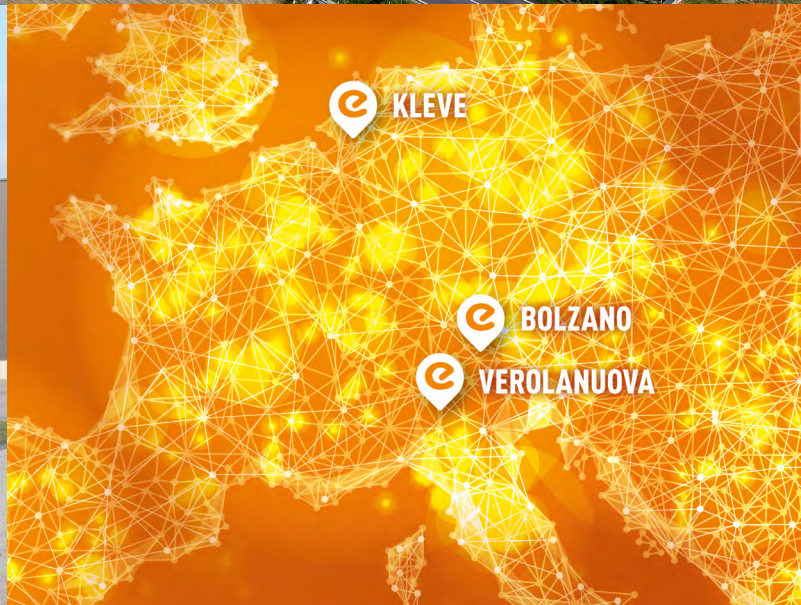
PRODUCTION PLANT BOLZANO/BOZEN (ITALY)



PRODUCTION PLANT VEROLANUOVA (ITALY)



PRODUCTION PLANT KLEVE (GERMANY)



Enetec SpA Benefit Company

Pillhof 89
I-39057 Frangarto (BZ)
T +39 0471 051 508
F +39 0471 051 509
mail@enetec.info

Plant Bolzano/Bozen

Molding & Milling
Pillhof 89
I-39057 Frangarto (BZ)
T +39 0471 051 508
F +39 0471 051 509
mail@enetec.info

Plant Verolanuova

EPS Production
Via IV Novembre, 34
I-25028 Verolanuova (BS)
T +39 030 933163
F +39 030 9923998
eps@enetec.info

Enetec GmbH

International sales
Kalkarer Str. 81 – Halle 26
D-47533 Kleve
T +49 2821 89 88 00
sales@enetec.info

Enetec Plastics GmbH

Pipe extrusion
Kalkarer Str. 81 – Halle 25-27
D-47533 Kleve
T +49 2821 89 88 00
pipes@enetec.info