



RADIANT
CEILINGS

radiant heating
& cooling
components

OEM



MAXIMUM COMFORT



NO AIR MOVEMENT



LOW TEMPERATURE



ARCHITECTURAL INTEGRATION



ENERGY SAVING



EASY INSTALLATION



HEATING & COOLING



SILENT



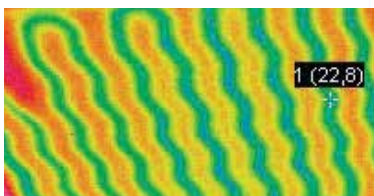
UNIFORM TEMPERATURE



ENVIRONMENTALLY FRIENDLY

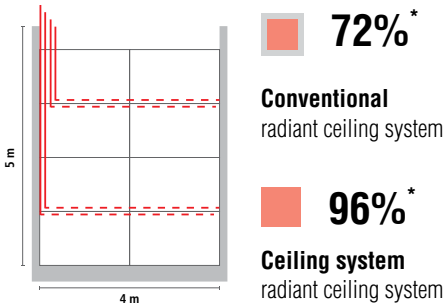
Certified system

Certified heating and cooling performance according to **EN 14037-5 - EN 14240**



MAXIMUM ACTIVE SURFACE

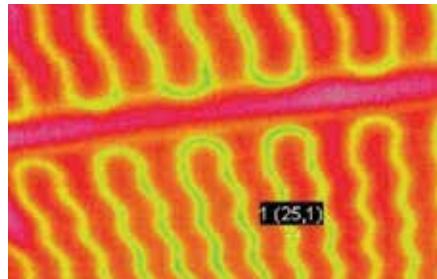
The Ceiling system is able to maximise the active surface (up to 96%*) compared to a conventional ceiling system (~ 72%*), as it incorporates the conveyance lines. A broader active surface generates greater heating or cooling uniformity, thus improving the degree of environmental comfort.



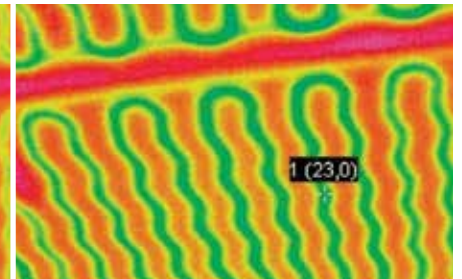
LOW THERMAL INERTIA

The diameter and thickness of the pipe used (10x1.3 mm), the piping integrated into the plasterboard and the special serpentine pattern of the piping make it a high-performance ceiling system with very low thermal inertia. Below are two thermographic pictures of the

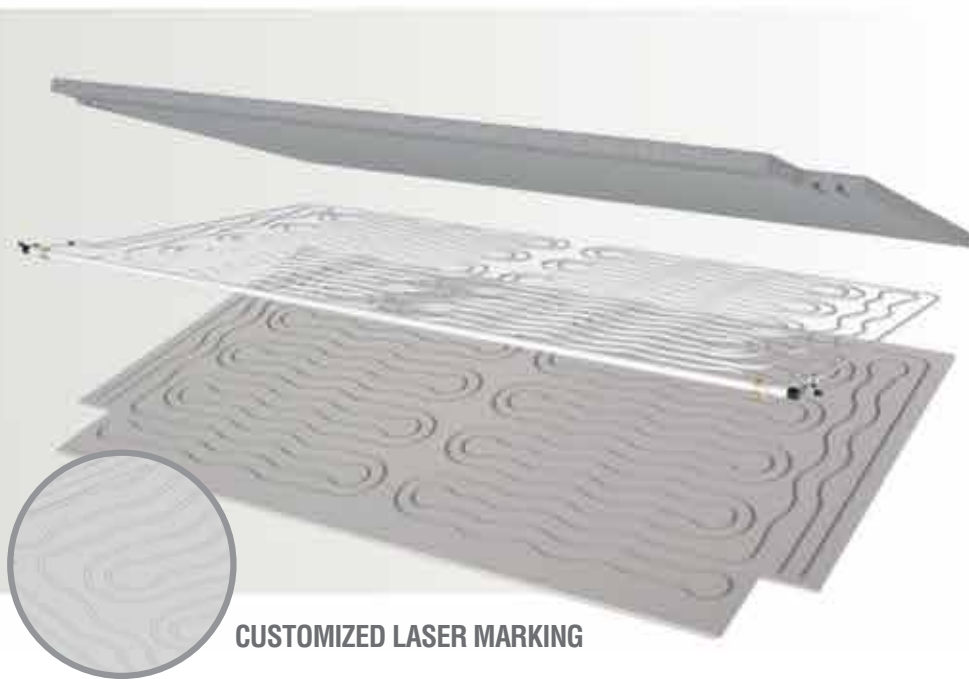
ceiling system operating in cooling mode with an average water temperature of 18°C. As can be noticed, after a mere 20 minutes the system has already reached full power.



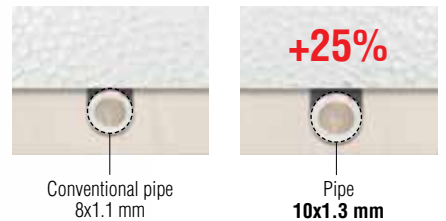
5 minutes from start-up



20 minutes from start-up



10X1.3 MM PE-RT PIPE (5 LAYER)

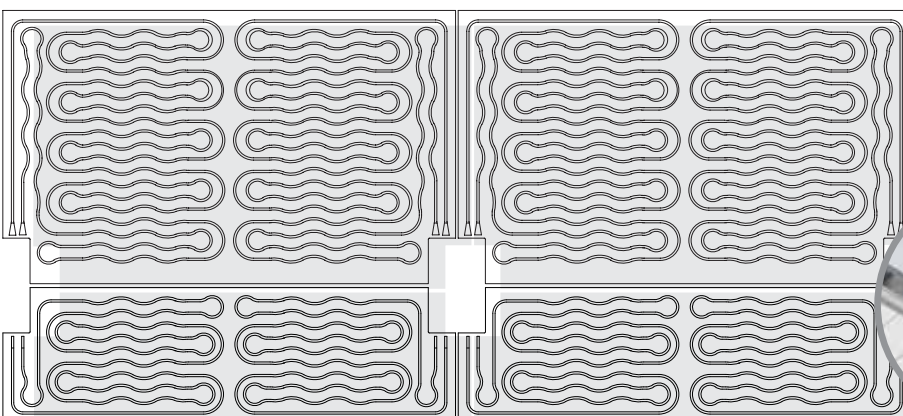


FITTINGS WITHOUT O-RINGS



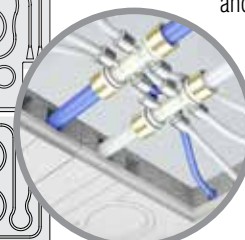
- 1. fitting ring
- 2. fitting
- 3. fitting ring
- 4. terminal element (capped)

INTEGRATED DISTRIBUTION LINE (MULTILAYER 20X2 MM)



PRACTICAL AND SAFE INSTALLATION

The conventional O-ring fittings are replaced by special fittings designed and manufactured for guaranteeing maximum tightness over time and for reducing head losses. The fittings are designed in such a way that, using appropriate range clamps, the pipe can be jointed practically and rapidly, thereby reducing installation times.



Ceiling systems



CEILING SYSTEM 10

- EPS 35 mm
- Plasterboard 15 mm
- || Pipedistance 10 cm



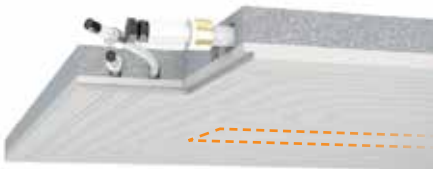
CEILING SYSTEM 5.5

- EPS with graphite 35 mm
- Plasterboard 15 mm
- || Pipedistance 5,5 cm



CEILING SYSTEM 5.5 HYDRO WATER-REPELLENT

- EPS with graphite 35 mm
- Plasterboard water-repellent 15 mm
- || Pipedistance 5,5 cm



CEILING SYSTEM LUX BUILDING INTEGRATION

- EPS with graphite 35 mm
- Plasterboard 15 mm
- || Pipedistance 5,5 cm



CEILING SYSTEM 3.5

- EPS with graphite 35 mm
- Plasterboard 15 mm
- || Pipedistance 3,5 cm



CEILING SYSTEM 3.5 HIGH PERFORMANCE

- EPS with graphite 40 mm
- Plasterboard with graphite 10 mm
- || Pipedistance 3,5 cm



CEILING SYSTEM FR FIRE RESITANT

- Fiber glass 50 mm
- Plasterboard 15 mm
- || Pipedistance 5,5 cm



ACOUSTIC CEILING SYSTEM

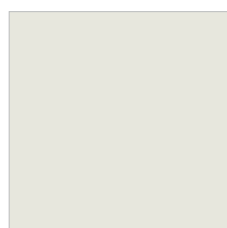
- Double Plasterboard 12,5 mm
- || Pipedistance 6 cm



ACOUSTIC CEILING SYSTEM HIGH PERFORMANCE

- Plasterboard 12,5 mm
- Plasterboard with graphite 10 mm
- || Pipedistance 6 cm

CEILING MODULE 600X600



Plasterboard 15 mm



Pipe 10x1,3 mm



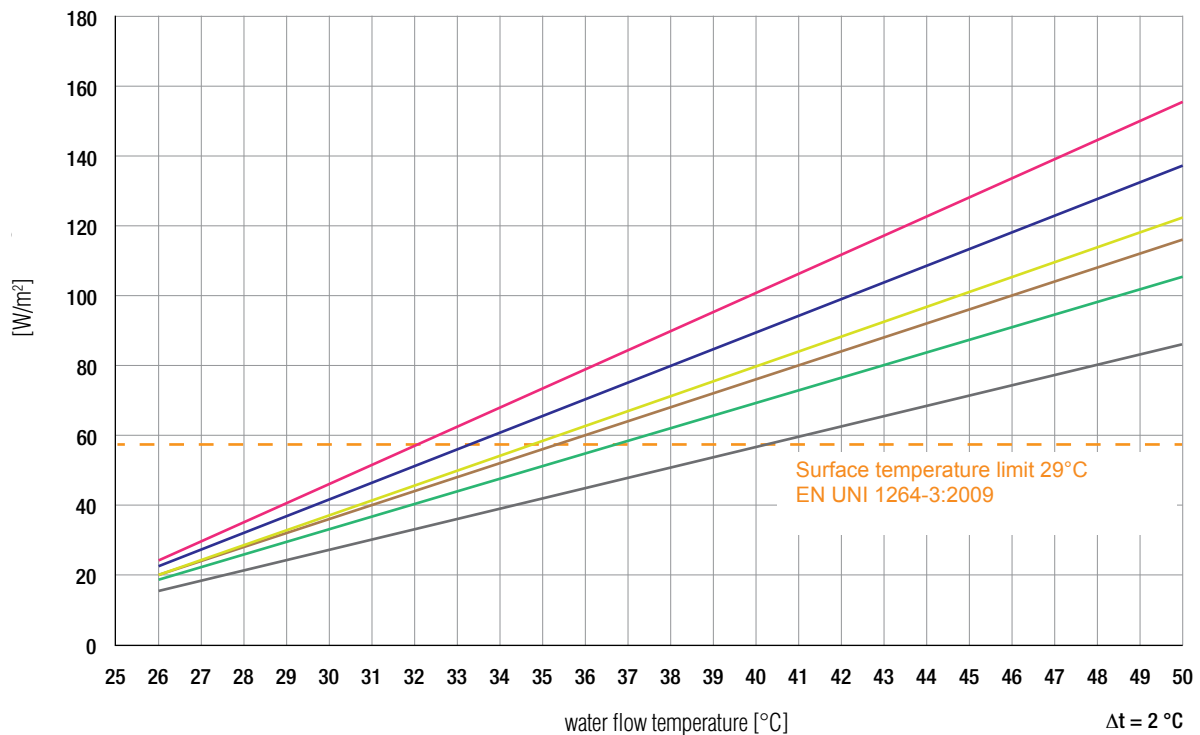
EPS/Graphit 35 mm



Heating

Curves deriving from the output certificates according to prEN 14037-5:2011 in heating mode

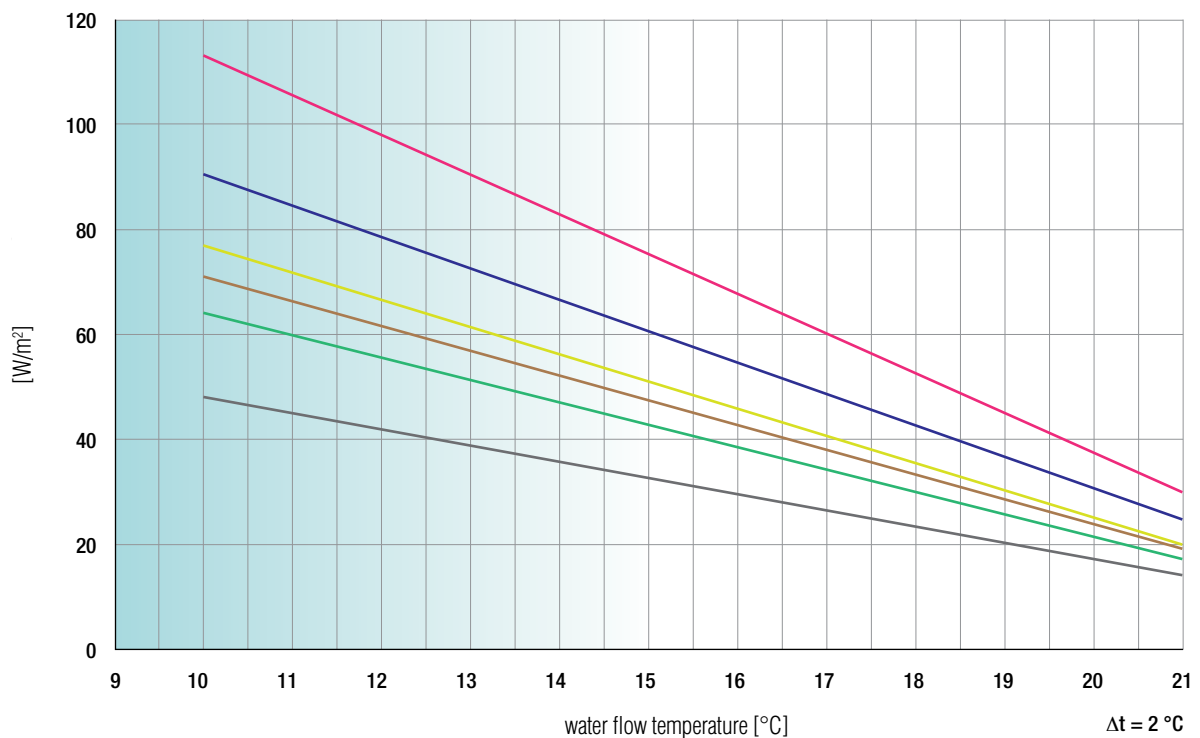
WSP_{lab}



Cooling

Curves deriving from the output certificates according to UNI EN 14240:2005 in cooling mode.

WSP_{lab}



- | | | | | | |
|--|-------------------|--|------------------------------|--|-----------------------------------|
| | CEILING 5.5 | | CEILING 3.5 HIGH PERFORMANCE | | ACOUSTIC CEILING |
| | CEILING 5.5 HYDRO | | CEILING 3.5 | | HIGH PERFORMANCE ACOUSTIC CEILING |
| | CEILING LUX | | CEILING RF 5.5 | | |
| | CEILING 10 | | CEILING RF 10 | | |

PRODUCTION PLANT BOZEN (ITALY)



PE-RT PIPES



INSULATION
BOARDS



MANIFOLDS &
DISTRIBUTION



SMART
THERMOSTATS

Ask us!

sales@enetec.info

enetec[®]
your OEM Partner

www.enetec.info

Enetec spa

Pillhof 89
I-39057 Frangarto (BZ)
T +39 0471 051 508
F +39 0471 051 509
mail@enetec.info

Enetec GmbH

International sales
Kalkarer Str. 81 - Halle 26
D-47533 Kleve
T +49 2821 89 88 00
sales@enetec.info

Plant Bozen

Molding & Milling
Pillhof 89
I-39057 Frangarto (BZ)
T +39 0471 051 508
F +39 0471 051 509
mail@enetec.info

Plant Enetec Plastics

Extrusion
Kalkarer Str. 81 - Halle 26
D-47533 Kleve
T +49 2821 89 88 00
pipes@enetec.info

Plant Verolanuova

EPS Production
Via IV Novembre, 34
I-25028 Verolanuova (BS)
T +39 030 933163
F +39 030 9923998
eps@enetec.info